

# Naming Opportunities

Naming a portion of this facility leaves not only a lasting legacy, but also support for the entire community. Below are areas where naming opportunities are still available.

## ☐ The Building

- ☐ Entry Area
- ☐ Reception Area
- ☐ Artwork
- ☐ Counseling Room (southeast corner)
- ☐ Counseling Room (east side)
- ☐ Bereavement Reception Area
- ☐ Kids Counseling Room (northeast corner)
- ☐ Kitchen
- ☐ Volunteer Computer Work Room
- ☐ Offices (bereavement and volunteer)
- ☐ Meeting Room (enclosable on southwest corner)
- ☐ Movable Glass Wall (to enclose meeting room)
- ☐ Volunteer Work Room (large central area)
- ☐ Rooftop Garden

- ☐ Mobile Care Unit – Ambulance Garage
- ☐ Mobile Care Unit – Ambulette Garage
- ☐ Mobile Care Unit Office
- ☐ Workshop (southeast corner)
- ☐ Facilities Office
- ☐ Landscaped Area on East Side of Building;  
Viewable from the East Counseling Room
- ☐ Front Entrance Landscaping
- ☐ North Side Retaining Wall
- ☐ Green Space to West of Building

# Building Support **2021** Expanding Care, Support and Access

## Questions?

For more information, please contact  
Katherine Ritchie at 330.264.4899 or  
KRitchie@LifeCareHospice.org

[www.OhiosHospiceLifeCare.org/BuildingSupport](http://www.OhiosHospiceLifeCare.org/BuildingSupport)



OHIO'S  
*Hospice*  
LifeCare

## Growing to the Community Need

Since 1982, we have had the honor and privilege to care for those in our community as they face the end of life. Our interdisciplinary team of nurses, personal care specialists, chaplains, social workers, bereavement counseling professionals and volunteers support around-the-clock care for more patients and families than ever before.

As the population of Ohioans over the age of 65 continues to expand, the need for superior care and superior services for those facing the end of life becomes even more important in our community. This campaign will create dedicated building space for three integral areas of our mission: bereavement, volunteers and transportation. This building will provide more individual and group counseling rooms for our Pathways of Hope<sup>SM</sup> program, a larger gathering space for training and seminars for both volunteers and the community, office space, and garages built for our current Mobile Care Unit and the expansion of this service.

## EXPANDED SERVICES

### Community Bereavement

The expanded space for bereavement support connects with the community's need in coping with loss through normal times and during the pandemic. This space provides educational workshops, counseling and group support options through our Pathways of Hope<sup>SM</sup> program.

### Volunteers

Volunteers who play a vital role in our care benefit from dedicated space to provide many of our supportive services, as well as space for education and support. This volunteer effort also supports our patient care through many clerical and other needed tasks.

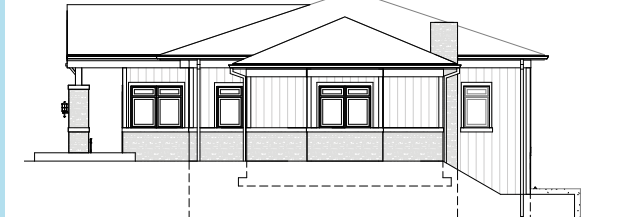
### Mobile Care Unit Garage

With the addition of a new Mobile Care Unit garage and dedicated ambulette garage, this facility will provide much needed transportation support with additional vehicles to expand availability of care.

South



East



West



Architectural views of building.



### Mobile Care Unit

At the end of 2019, we were able to begin using our new Mobile Care Unit to meet the needs and quality-of-life goals of our patients and families.

With this new building, we will be able to expand our Mobile Care Unit services with the addition of more vehicles and dedicated garage space.



View of the proposed renovation.  
Project completion expected January 2022.

This facility offers over  
9,000 sq. ft. of additional  
space for mission services.