

Celebrating Life's Stories[®]

A NEWSLETTER FOR OUR FRIENDS

VOL. 4 | ISSUE 2 | SUMMER 2021

Community Support for the Center for Supportive Care

The power and generosity of philanthropy is evident every day at Ohio's Hospice LifeCare. Gifts are made in honor or in memory of family, loved ones and community members to support the nearly 40 years of care given to the community through hospice and bereavement services.

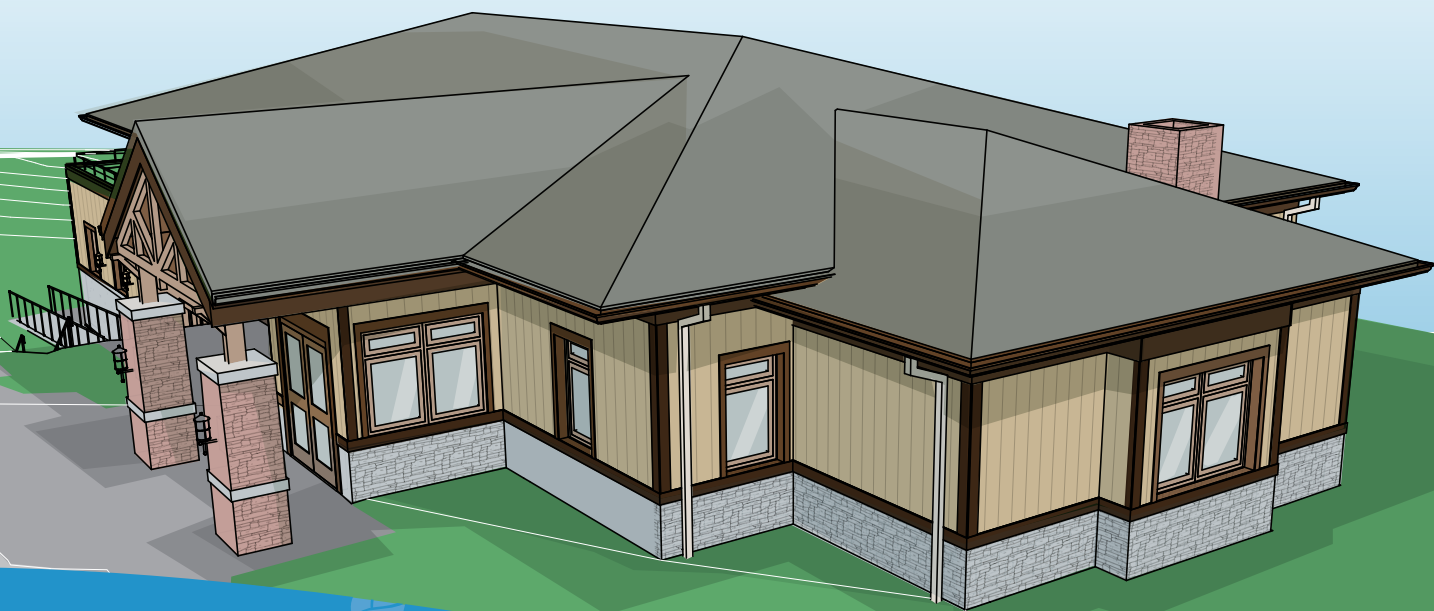
The Marilyn B. and Mark E. Gustafson Center for Supportive Care is an example of generous support from members of our community. This center, scheduled to open in January 2022, will encompass three facets of Ohio's Hospice LifeCare's mission — grief support, volunteer services and transportation.

At the time of printing, more than \$1.3 million has been raised towards our \$2.5 million goal. This existing

building will be transformed to house three essential services that reach so many in our community. With the onset of the COVID-19 pandemic and so many living losses, the increase in support from our Pathways of HopeSM program has increased steadily. More than 200 community members support Ohio's Hospice LifeCare through volunteering. This new building will provide a dedicated space for training.

We are grateful for the gifts that have been so generously donated by first-time donors and long-time supporters alike. Each gift will help us reach our goal as we continue the support Ohio's Hospice LifeCare has always given to families, friends and neighbors.

To learn more about naming opportunities or to discuss a gift, please contact Katherine Ritchie, development director, at 330.264.4899. To make a contribution online please visit: <https://www.OhiosHospiceLifeCare.org/BuildingSupport/Building-Support-Donations/>



Navigating Through the COVID-19 Pandemic



Kurt Holmes
Executive Director
Ohio's Hospice LifeCare

Hardship tends to bring out the best and worst in people. During the past year, we have all seen frayed nerves and quick tempers as we face the challenges of the COVID-19 pandemic. But we also have seen amazing acts of compassion, grit and grace.

I am always proud of the way the team at Ohio's Hospice LifeCare cares for patients and their families. But it has

been a particular honor to be part of this team during the age of the COVID-19 pandemic. Our team had to learn how to render superior care at a distance. Some of that distance was due to telehealth limitations. But even when you could be physically present with a patient, the masks and face shields put up walls at a time when everyone craved connections. The nurses, chaplains, social workers and personal care specialists pivoted to new Centers for Disease Control and Prevention (CDC) rules and procedures daily.

The mission support staff kicked into high gear, ensuring availability of Personal Protective Equipment (PPE), constantly sanitizing, and reconfiguring office space in response to evolving guidelines. And everyone found themselves testing, testing, testing. The mantra became "Stay Positive, Test Negative!"

The costs of the pandemic have been high. So many have lost a friend, family member or co-worker. Financial strain was obvious everywhere. Hospice was no exception. But what wasn't obvious was the "living losses" when graduation ceremonies were canceled, weddings postponed, and simple things like going out to dinner became impossible. Our team helped families navigate these living losses and the associated grief even as they felt the impact themselves.

I have always been proud of the team at Ohio's Hospice LifeCare. The way they stepped up to the challenges of caring for patients during the pandemic was truly inspiring. Thank you for your support as we navigate through these challenges.

Spring Memorial Honors and Remembers Loved Ones

Ohio's Hospice of LifeCare is honored to offer a place for those who mourn to remember and celebrate the lives of their loved ones. On Sunday, May 23, Ohio's Hospice LifeCare Pathways of HopeSM held a Spring Memorial at the Wayne County Fairgrounds Event Center.



This was a time of remembrance for loved ones who passed away during the past year. Almost 60 families gathered safely together on a beautiful spring day to celebrate the lives and stories of loved ones in the community. The names of loved ones were read aloud, and music was woven throughout the service.

David Hargrave, LSW, CTP, CGCS, bereavement counseling professional with Ohio's Hospice LifeCare, addressed the group with words of comfort. "We've come to mourn, celebrate and reflect," he said. "We mourn because the places our loved ones occupied are now vacant. We celebrate because they gave us so much to remember. And, we reflect on those memories."

The Fall Memorial will be held on Sunday, October 24. For more information on how you can participate in the bereavement services offered by Pathways of Hope, please visit: <https://www.OhiosHospiceLifeCare.org/Services/Bereavement-Services/>

Q & A Interview With Rebecca McCurdy



Rebecca McCurdy,
Manager of Volunteer Services
Ohio's Hospice LifeCare

As construction begins at the Marilyn B. and Mark E. Gustafson Center for Supportive Care, Rebecca McCurdy, manager of Volunteer Services at Ohio's Hospice LifeCare, is looking forward to moving into the new center.

Q How long have you worked for Ohio's Hospice LifeCare?

A On June 22, I celebrated 29 years with Ohio's Hospice LifeCare serving our community.

Q What has the past year with the COVID-19 pandemic taught you about volunteerism and your community?

A I was already very impressed with the quality of volunteerism in our community. We have an extremely robust and involved volunteer team. But it was impressive to see how volunteers were able to adapt and maintain their commitment.

Q Are there any stand-out memories from the past year and your volunteers?

A There are many. Our medication/supply delivery volunteers rose to the designation of essential workers, helping us make sure our patients and their families had the things they needed. Guy Lilley, one of our volunteers, was instrumental in making this effort a success.

Our volunteers were willing to don protective gear and find ways to connect with words and eye contact. Lynn Young is a great example of one of these volunteers.

Our volunteers were able to connect with patients via phone calls and build really meaningful relationships with patients, despite never actually being in their physical presence. Marilyn Gustafson excelled with this challenge.

Our volunteers also expanded our bereavement support for spouses going through their loss in such a strange and isolated time. Volunteer Sue Snively was crucial in this outreach.

Q What will the new Center for Supportive Care afford you and your volunteers?

A The Marilyn B. and Mark E. Gustafson Center for Supportive Care will be a place where the Volunteer Team can prosper and grow in our sense of community. Volunteer education, including the initial training, ongoing continuing education, and volunteer support, will thrive in this designated space. We expect to be able to expand the volunteer contribution to administrative support with additional computer workstations and group work spaces. Because we'll be sharing the space with the bereavement program, we hope to expand the volunteer support role in that area, too.

Q What are you looking forward to the most with the new space and resources?

A The volunteer program at Ohio's Hospice LifeCare is really an integral part of our mission. To me, the fact that Ohio's Hospice LifeCare has prioritized expanding our space and enriching our resources is a symbol of the respect for the volunteer contribution to our mission. Even with the limitations of the COVID-19 pandemic, more than 10% of patient care was contributed by volunteers in 2020. In a "normal" year, that contribution regularly exceeds 20%. The link between this hospice and the communities we serve is most strongly seen in the extraordinary commitment and compassion of our volunteer team. Having the Gustafson Center take pride of place on our campus will say to anyone who drives by, "This is a community that takes care of its own."

Q What would you say to anyone considering making a donation or volunteering their time to the organization?

A Ohio's Hospice LifeCare is extremely good at utilizing our resources in a meaningful way. Every dollar and every hour contributed to this work goes to the very core of our mission. This is a place where we don't settle for mediocrity. Every member of our team of care, both paid and volunteer, is fully committed to enhancing our patients' last season of life in every way possible. Despite the sorrow we bear witness to, that makes Ohio's Hospice LifeCare a joyful place to work.

Campaign Support from the Wayne County Community Foundation

This spring, Ohio's Hospice LifeCare received a \$100,000 grant through the Wayne County Community Foundation from the John Kaylor Memorial Fund and anonymous community funds for the Marilyn B. and Mark E. Gustafson Center for Supportive Care. These funds will be used to completely reconstruct and extend an existing unused building on our campus to provide more space for our essential services.

Ohio's Hospice LifeCare also received one of the first grants from the Stanley C. Gault Philanthropic Leadership Fund through the Wayne County Community Foundation. The grant was for \$50,000 for our Center for Supportive Care.

"We are so thankful for our partnership with the Wayne County Community Foundation," said Kurt Holmes, executive director of Ohio's Hospice LifeCare. "We're grateful to the foundation and to members of our community who support our mission."

Gifts to the Center for Supportive Care can be made through the Wayne County Community Foundation by visiting <https://www.WayneCountyCommunityFoundation.org/> and searching for Hospice Center for Supportive Care.



Wayne County
COMMUNITY FOUNDATION
SHARING YOUR LIFE WITH SOMEONE YOU MAY NEVER MEET®

You also may mail a check to:

Wayne County Community Foundation

517 N. Market St.

Wooster, OH 44691

Memo Line: Hospice Center for Supportive Care

If you have any questions, please contact Katherine Ritchie at KRitchie@LifeCareHospice.org. or 330.264.4899.

Thanks to Friendtique and Nest for Their Support of Our Mission

Friendtique
shop • donate • volunteer

www.Friendtique.org
223 West Liberty St., Wooster



www.Friendtique.org/nest
132 N. Walnut St., Wooster



Celebrating Life's Stories is published semiannually for patients, families, staff members and friends of Ohio's Hospice LifeCare.

Kent Anderson, CEO, Ohio's Hospice
Kurt Holmes, Executive Director, Ohio's Hospice LifeCare

Ohio's Hospice LifeCare has the privilege of providing superior care and superior service to members of our community. If you would like to be removed from our mailing list, please call us at 330.264.4899.

Copyright © 2021 Ohio's Hospice, Inc. All rights reserved.

OHIO'S
Hospice
LifeCare

www.OhiosHospiceLifeCare.org
330.264.4899



In Memory & Honor of Our Loved Ones

In appreciation for the superior care and service Ohio's Hospice LifeCare provides.

Each year we give family members an opportunity to honor or memorialize loved ones by participating in our Memorial Day mailing. Listed on the following pages are these special remembrances. Loved ones being recognized are printed in green with the names of those who are honoring/memorializing them appearing below in black, if requested.

Larry Aber

Sharon Aduddell

Lynne & Jeff Massie

Timothy Appleton

Mary Gail & Jeff Hanna

Arline (Peggy) Aukerman

Alida E. Carter

Phillip Aylsworth

Jerry & Ann Jones

Carol Annalee Bagley

Bobby Baughman

Jerry & Connie Herman

Winton Bauman

Linda Landis

Tom & Adele Becker

Ruth Ann Bowman

Her Family

Samuel R. Bowman

Susie L. Bowman

Elton Boyer

Dorothy Boyer

Hulda K. Burk

Charles & Margaret Campbell

Patricia Cherilla

Sue Madick

Betty Cherry

Don & Brenda Cherry

Beverly J. Christman

Carol & Bob Cochrell

Bud & Ann Olszewski

Richard F. Cooke

Carol Cooke

Dave, Christina & Gavin Ennis

Jack Crafton

Stephanie Klein

Howard & Mary Cramer

Cindy & Dave Iden

Vincent Dalessandro

Joan Dalessandro

Shawn Daugherty

Portia Wilson

Donna Davis

Joe Simone

Martha Davis

Lucy Schmidt

Martha Davis

Stan & Linda Wengerd

Robert C. (Bob) Diehl

Mary Lou Diehl

Don & Faith Doerfer

Kristen Hanson, Mark & Evelyn

Cain & Carolyn Doerfer

Esther L. Donelson

Robert D. Donelson

Harold Downey

Mary Gillespie

Mary Jo Drabenstott

Jackie Lee

William H. Dunham

Elva Dunham

Donald E. Eaken

Lorraine Eaken

Melissa Joy Esh

Craig & Nancy Winey

Randal P. Flory

Edward Franks

Chuck Beck

Calvin Fravel

Bob & Brenda Fravel

Ed & Lorna Funai

Richard G. Geitgey

Thelma I. Geitgey

Gordon & Vicki Giffin

Karen Boyer Ferrara

Vince & Mary Lou Gilbert

Frank & Linda Gilbert

Audrey Grissinger

Deb Montgomery

"Your memory feels like home to me. So whenever my mind wanders, it always finds its way back to you."

- Ranata Suzuki

Mitch Hackel

Doug Meigs

Dorothy L. Hayes

Gayle Hostetler

Lonnie D. Hinton

L. Max Hinton

Michael Hurst

Sylvia Hurst

Charlotte Hutchinson

Valerie Edmond

Thelma Ickes

Joyce & Tom Barker

Edna Jackson

Robert Jester

GWRRRA Chapter I

Douglas A. Johnson

Mr. & Mrs. Richard A. Johnson

John P. Jordan Jr

Dottie Jordan & Family

Max Kennedy

Janis Kennedy

Carolyn Keplar

Ralph Keplar

Kip Kiste

Derek & Jen Woods

Jerry Krabill

Martha M. Martin

Barbara Ladd

Steve & Barbara Lee

Barbara J. Leatherman

Buck & Terri Grimm

Marjorie Louderback

Kenny & Jenny Louderback

Norman E. Lowe

Bonnie R. Lowe

Connie S. Macerol

Dennis Macerol

Carl Maslak

Celia Maslak

Kay Masters

Bill Masters

Calvin McCoy

Beverly McCoy

Louis McGrath

Judy Himes

Jack McMullen

Diana L. McMullen

Ron Meeks

Joanne Meeks

Sandra Lee Meinke

Mr. & Mrs. David J. Meinke

David J. Metheney

Rosalee Metheney

Anna Miller

Henry "Hank" M. Miller

Judy Anne Miller

Joy Clemens

Mary Ann Miller

James Miller

R. Dale Miller

Noreen L. Miller

Keith & Alice Morrow

Frank & Linda Gilbert

Al Mowrer

Judy Mowrer

William C. Mueller

Annetta June Mueller

Paul W. Parker

Lydia Parker

Bill Pim

Joanne Pim

Gene Edward Pollock, PhD

Vivian Holliday

Mary Ann Post

Stanley L. Post

Shirley Price

Fred & Nyla Gallion

Norma Ramsier

Hud & Marie Rutter and Family

Klines "Fat" Ridenbaugh

Kirk & Shane Snyder Family

Marvel Jean Schrock

Norm/Sandy Sohar

Charles & Kenneth Shane

Kathleen Shane

Rick Shane

Carol Shane

Judy Sherrick

Hazel Krempel

Marcella Croft Shew

Tom & Nancy Sargeant

Nevin D. Short

Lois A. Short

Marylou Snyder

Kirk & Shane Snyder Family

Pauline Weber

Linda D. Staggs

Gary L. Staggs

Delores Stevens

Judi Harvey

H. James (Jim) Straub

Family of Jim Straub

Raymond B. Stryker

Peggy Stryker

C. Thomas Stull

Marilyn Stull Family

Lou Ann Tomassetti

Velma M. Tomassetti

Herman Ullom

LaVerne Van Bergen

Joan French

Louise VanZile

Linda Landis

Linda S. Wigton

Ronald R. Wigton

Diane Yanick

Rella King

Alice M. Yoakem

Edward Yoder

David Zimmerman

Jerry & Ann Jones

Susan Zimmerman

Tommy L. Zimmerman

Lana Sue Zinkon

Linda Zollinger