



Announcing Ohio's Hospice LifeCare Center for Supportive Care

Expanding Support and
Access to Our Community

Announcing the launch of a \$2.5 million campaign to create dedicated building space to meet the needs of those in our community facing the end of life.

OHIO'S
Hospice[®]
LifeCare 

Growing to the Community Need



Since 1982, Ohio's Hospice LifeCare has had the honor and privilege to care for those in our community as they face the end of life. Our interdisciplinary team of nurses, personal care specialists, chaplains, social workers, bereavement counseling professionals and volunteers support around-the-clock care for more patients and families than ever before.

As the population of Ohioans over the age of 65 continues to expand, the need for superior care and superior services for those facing the end of life becomes even more important in our community.

This \$2.5 million campaign will create dedicated building space for three integral areas of our mission: bereavement, volunteers and transportation. This building will provide more individual and group counseling rooms for our Pathways of HopeSM program, a larger gathering space for training and seminars for both volunteers and the community, office space, and a transportation hub built for our current Mobile Care Unit and the expansion of this service.

A stylized, handwritten signature in black ink that reads "Kurt".

Kurt Holmes
Executive Director of Ohio's Hospice LifeCare

An architectural line drawing of a two-story building with a dark grey roof, light green horizontal siding, and a stone-textured base. It features several windows and a chimney. In the background, a smaller, similar building is shown in a lighter grey tone.

Existing Building

View of the proposed renovation
located at 1900 Akron Rd., Wooster, OH 44691.
Project completion expected January 2022.

Community Bereavement

The expanded space for bereavement support connects with the community's need in coping with loss through normal times and during the pandemic. This space provides educational workshops, counseling and group support options through our Pathways of HopeSM program. Bereavement services are offered free of charge to the whole community, not just those who have used hospice care.

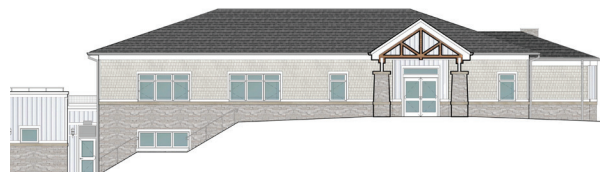
Volunteer Services

More than 200 volunteers play a vital role in direct patient care for patients and families of Ohio's Hospice LifeCare. This dedicated space will allow for training and education, projects supporting staff, and events. As we serve more patients, our need for more volunteers continues to grow and space that can support these efforts.

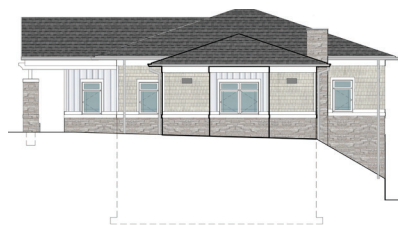
Transportation Hub for Service and Support

With the addition of a new Mobile Care Unit garage and dedicated ambulette garage, this facility will provide much-needed transportation support with additional vehicles to expand availability of care.

South



East



West



Architectural views of building.



Mobile Care Unit

At the end of 2019, we launched our new Mobile Care Unit to meet the needs and quality-of-life goals of our patients and families.

This new building will include a transportation hub, where our Mobile Care Unit will be housed. This hub will enable us to expand our transportation services.

This facility offers more than 9,000 square feet of additional space for mission services.

Naming Opportunities

Naming a portion of this facility leaves not only a lasting legacy, but also support for the entire community. For more information about naming opportunities, please contact Katherine Ritchie at KRitchie@LifeCareHospice.org or 330.264.4899.

Recognizing the Need for Additional Services

Since 1982, Ohio's Hospice LifeCare has been privileged and honored to serve the community as its local not-for-profit hospice. As we look to the future, we recognize the need to expand our facility.

As we continue to expand our care, support our patients and families, and provide access for more people throughout our community, we are repurposing an existing building adjacent to our campus to create a facility for Volunteer Services, Pathways of HopeSM Grief Counseling Center, and our Mobile Care Unit.

We have had the privilege of serving a record number of patients and families as part of our mission. However, our community has suffered the loss of so many lives to COVID-19. Our general bereavement outreach has never been more needed.

Our volunteers have risen to the occasion, just as our paid staff members have continued to provide superior care and superior services throughout the pandemic. Our volunteers have provided support to patients who have become even more isolated during the pandemic, staying in touch with them by phone and through cards and letters.

In addition, our Mobile Care Unit has become a valued resource for our patients and families. We plan to add a transportation hub to better serve our patients and families who are using our Mobile Care Unit.

Our new Center for Supportive Care will allow us to expand support for the community.

Community Bereavement

Through our Pathways of HopeSM program, bereavement services are offered free of charge to the community, not just those who have used hospice care. Much of our community bereavement care involves families who have lost loved ones to addiction or suicide. Children and multi-generational families utilize our services especially when the loss is of a parent of young children.

Local schools host our team for grief support groups and refer children for individual counseling free of charge. Our bereavement program partners with local mental health and law enforcement to provide care and support within those organizations.

Educational workshops are offered monthly and focus on specific types of losses or grief responses. Group grief support sessions are held regularly throughout the year. New meeting space will help us better provide grief support services to families and members of the community.

Some bereaved who have had loved ones die in our inpatient care center find it extremely painful to re-enter the same building for bereavement services. A separate building will ensure that this is not a barrier for anyone to participate in bereavement care.



Volunteer Services

Volunteers play a vital role in the care of our patients and their families. They support our staff in direct patient care, including caregiver respite, medication and supply delivery, patient visits, music therapy, assisted-animal therapy, Veteran support, administration support, grounds maintenance and more. We are grateful to the more than 200 volunteers who support our mission and provide critical support.

Our Volunteer Services program continues to expand as the number of patients in our service grows.

However, we do not have dedicated workspace for our volunteers. Additional space for projects and coordination is needed. Our volunteers also help us with data entry. We need a dedicated space with computers for this effort.

Our volunteer support meetings and educational opportunities are held monthly. In the past, attendance at these meetings has been limited because of space limitations. The flexible meeting space in the new building will accommodate more people than any meeting room that currently exists.



Transportation Hub for Service and Support

Hospice patients often need to be transported between settings in order to receive care. This may be from home to the hospice inpatient pavilion, from the hospital to a nursing facility, or to and from a doctor's appointment. Transportation by an ambulance is most commonly required.

With generous community support, we purchased our Mobile Care Unit in 2019. We achieved licensure as a medical service organization able to provide ambulance services in December 2019. This has made a difference in the lives of our patients and families.

As we continue to serve an increasing number of patients in the surrounding communities, the need for patient transportation will increase. The new transportation hub will allow for growth of our Mobile Care Unit team and provide space for additional vehicles in the garages. As we expand our transportation service, we will be able to offer additional hours and days available to transport patients.

Ways to Support This Campaign

- Use the enclosed donation envelope or mail your gift to Ohio's Hospice LifeCare at 1900 Akron Rd., Wooster, OH 44691. Please indicate Building Campaign in the memo line.
- Visit the Ohio's Hospice LifeCare building campaign website at www.OhiosHospiceLifeCare.org/BuildingSupport and click on the donate button.
- Visit Wayne County Community Foundation at www.WayneCountyCommunityFoundation.org and search for Hospice Center for Supportive Care.

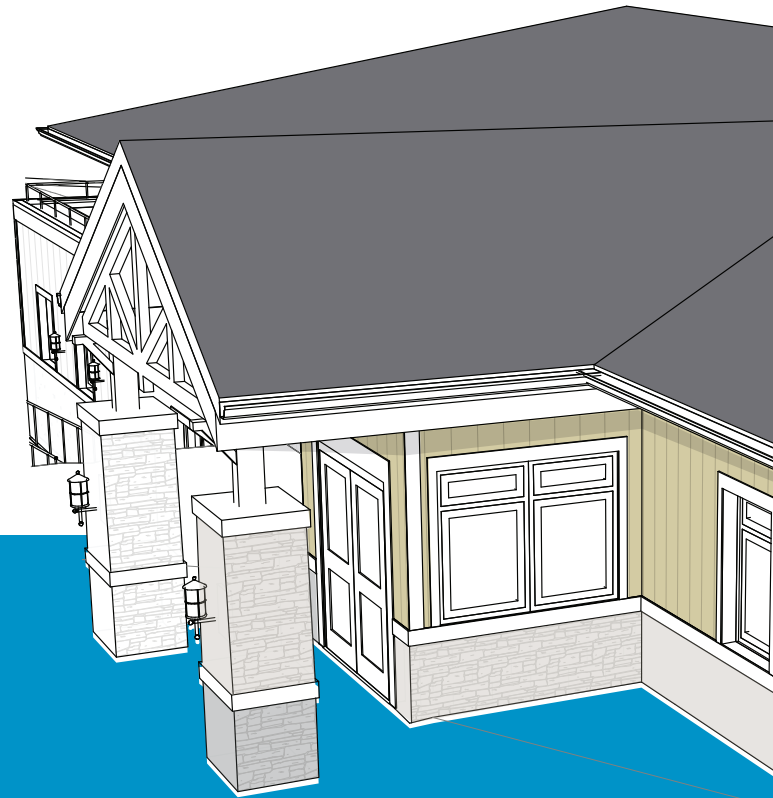
Support our expanding
community care!

Announcing

Ohio's Hospice LifeCare Center for Supportive Care

Growing to the
community need.

Special thanks to our project partners!



www.OhiosHospiceLifeCare.org/BuildingSupport